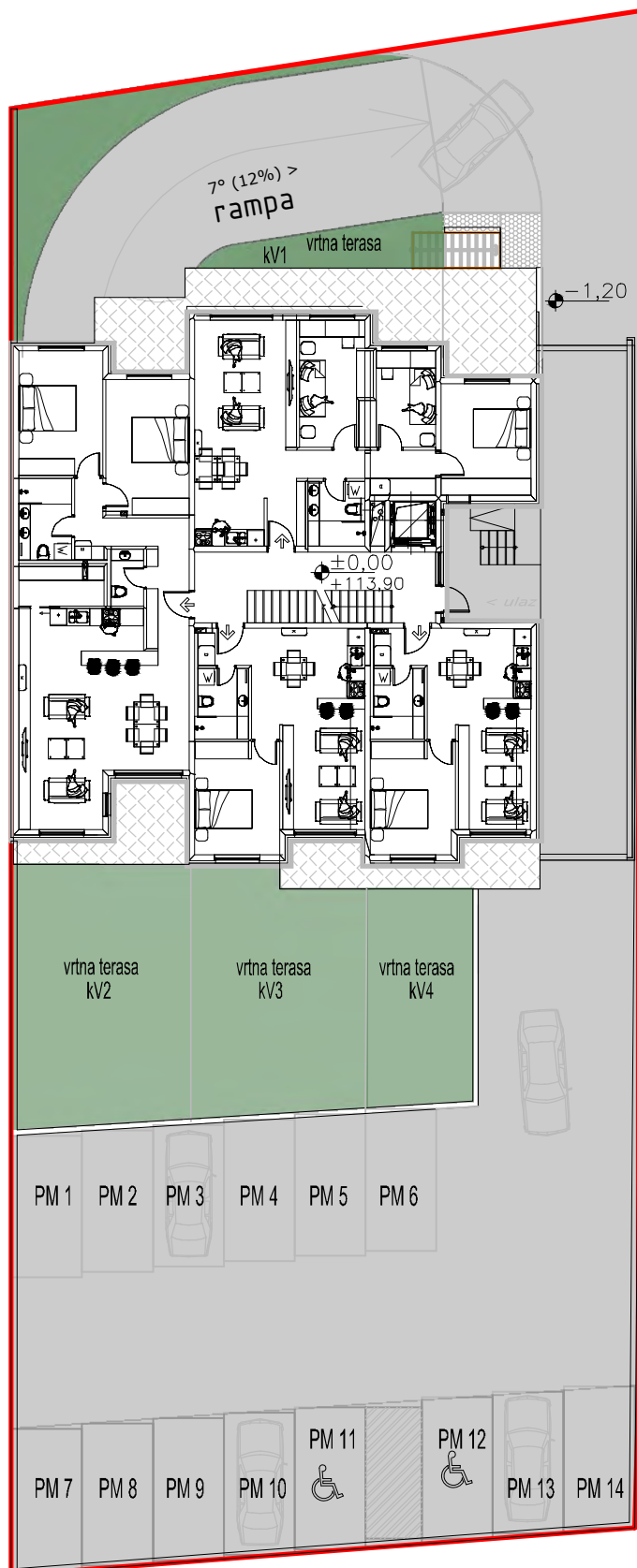
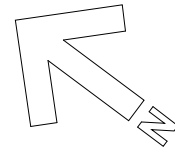




STAMBENA ZGRADA

Projekt Heinzelova, Zagreb

situacija



PROJEKT HEINZELOVA Spremišta

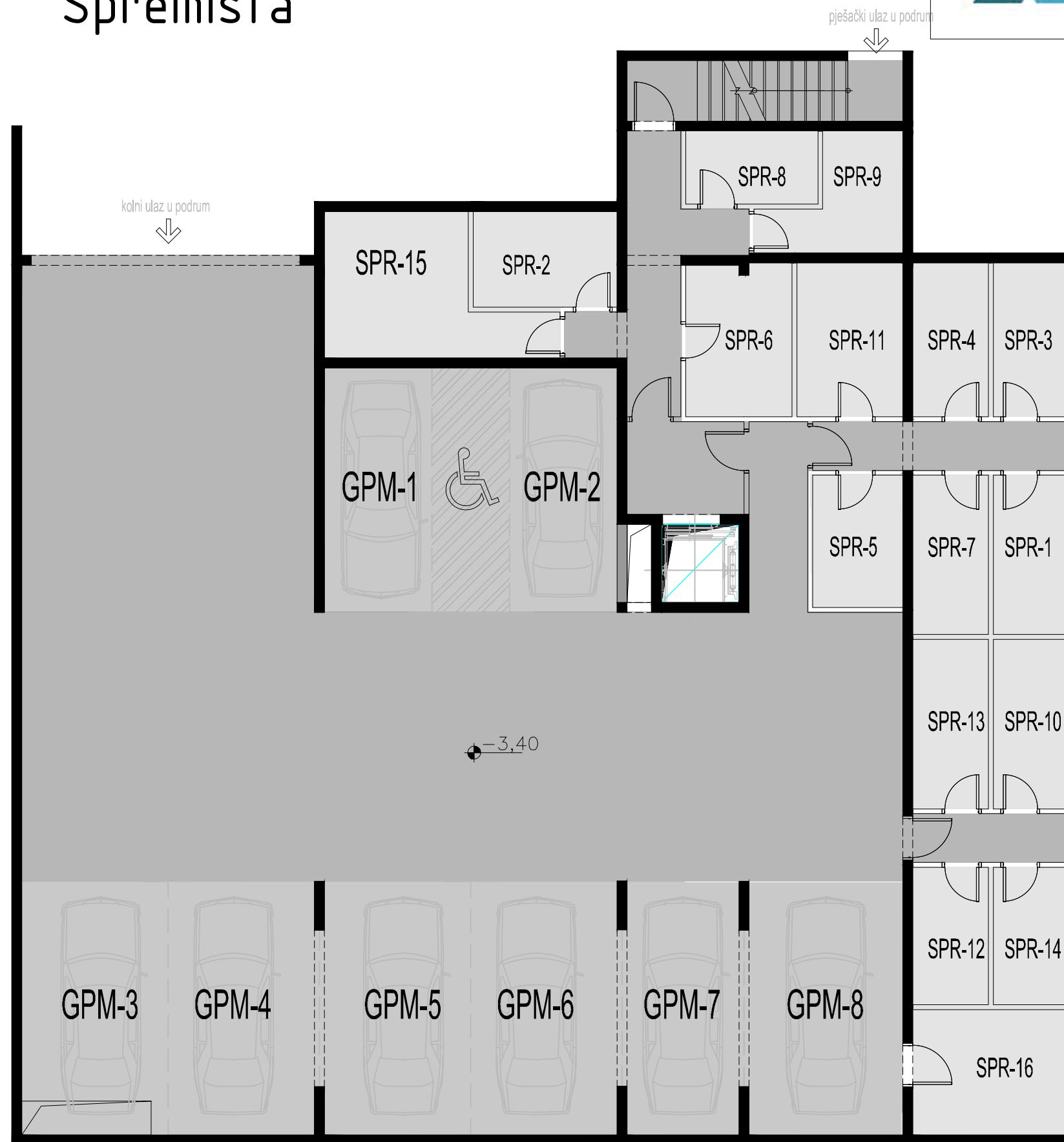


GRAĐEVINA: STAMBENA GRAĐEVINA
Stara Peščenica I br.52

PODRUM/DVORIŠTE

spremišta/garaže/parking

- m²



GPM podrum					
Br.	Naziv	površina	korisna površina	koef.	korisna vrijednost površina
1	GPM 1	15.00	15.00	0.50	7.50
2	GPM 2	15.00	15.00	0.50	7.50
3	GPM 3	16.10	16.10	0.50	8.05
4	GPM 4	16.10	16.10	0.50	8.05
5	GPM 5	16.10	16.10	0.50	8.05
6	GPM 6	16.10	16.10	0.50	8.05
7	GPM 7	14.00	14.00	0.50	7.00
8	GPM 8	16.40	16.40	0.50	8.20
GPM ukupno			124.80	4.00	62.40

PM dvorište					
Br.	Naziv	površina	korisna površina	koef.	korisna vrijednost površina
1	PM 1	12.50	12.50	0.25	3.13
2	PM 2	12.50	12.50	0.25	3.13
3	PM 3	12.50	12.50	0.25	3.13
4	PM 4	12.50	12.50	0.25	3.13
5	PM 5	12.50	12.50	0.25	3.13
6	PM 6	12.50	12.50	0.25	3.13
7	PM 7	12.50	12.50	0.25	3.13
8	PM 8	12.50	12.50	0.25	3.13
9	PM 9	12.50	12.50	0.25	3.13
10	PM 10	12.50	12.50	0.25	3.13
11	PM 11	12.50	12.50	0.25	3.13
12	PM 12	12.50	12.50	0.25	3.13
13	PM 13	12.50	12.50	0.25	3.13
14	PM 14	12.50	12.50	0.25	3.13
PM ukupno			100.00	2.00	25.00

k.č.br. 2010/1 k.o. Peščenica

mj 1:100

tlocrt podruma i parking dvorišta

issa visual d.o.o.



PROJEKT HEINZELOVA

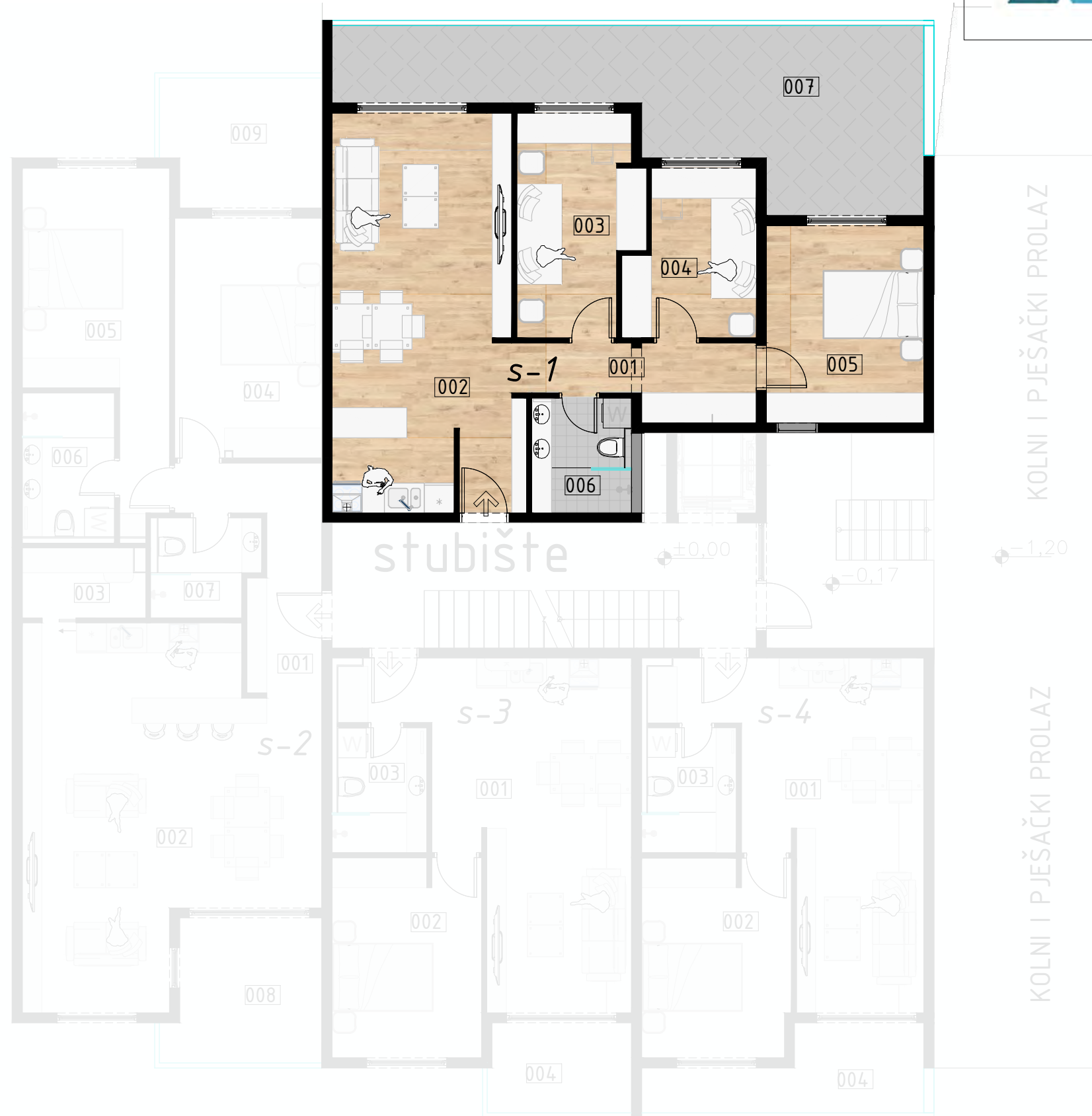


GRAĐEVINA: STAMBENA GRAĐEVINA
Stara Peščenica I br.52

PRIZEMLJE

S-1

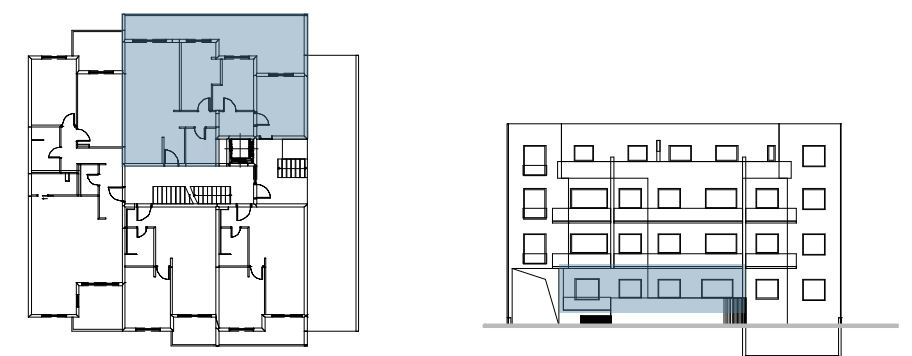
90,26 m²



STAN S-1 prizemlje

Br.	Naziv	površina	korisna površina	koef.	korisna vrijednost površina
1	hodnik	6.38	6.38	1.00	6.38
2	dn.bor/kuh/blag.	29.32	29.32	1.00	29.32
3	soba 1	10.32	10.32	1.00	10.32
4	soba 2	8.13	8.13	1.00	8.13
5	master soba	12.48	12.48	1.00	12.48
6	kupaona	4.60	4.60	1.00	4.60
			posebni dio S-1		71.23
7	nat.terasa	28.21	28.21	0.50	14.11
			sporedni dio S-1		28.21
	4- sobni	S-1 ukupno		m ²	85.34
	vrtna terasa	11.55	11.55	0.10	1.16
	spremište SP-1	5.03	5.03	0.75	3.77
			pripadak S-1		16.58
			Neto stan S-1 ukupno	m ²	90.26

položaj stana



k.č.br. 2010/1 k.o. Peščenica

mj 1:100

tlocrt prizemlja

issa visual d.o.o.



PROJEKT HEINZELOVA

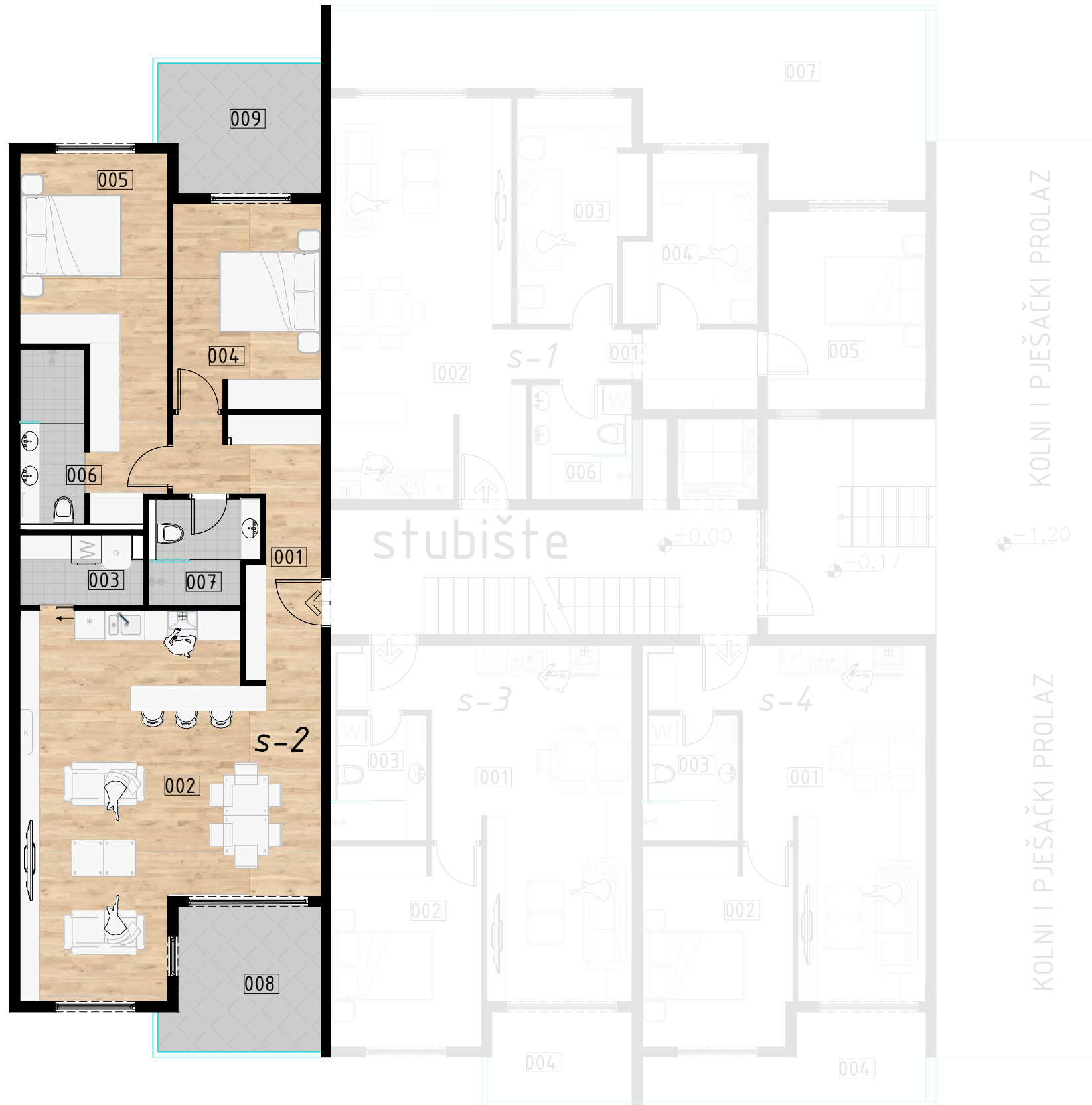


GRAĐEVINA: STAMBENA GRAĐEVINA
Stara Peščenica I br.52

PRIZEMLJE

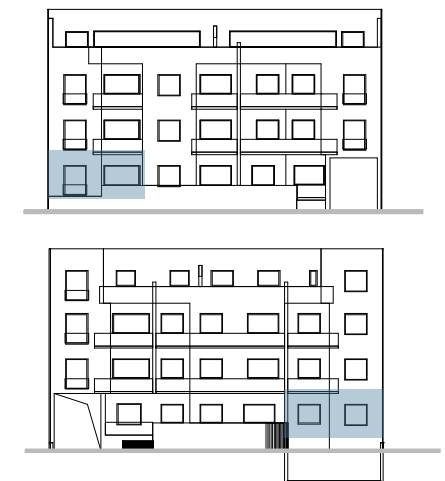
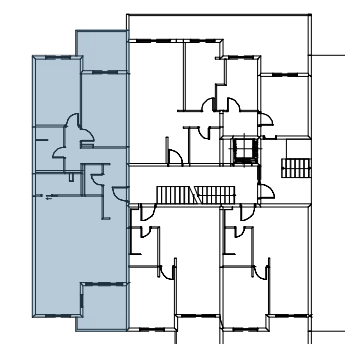
S-2

108,70 m²



STAN S-2		prizemlje			
Br.	Naziv	površina	korisna površina	koef.	korisna vrijednost površina
1	ulaz/hodnik	9.62	9.62	1.00	9.62
2	dn.bor/kuh/blag	38.11	38.11	1.00	38.11
3	ostava	3.34	3.34	1.00	3.34
4	soba	12.09	12.09	1.00	12.09
5	master soba	16.54	16.54	1.00	16.54
6	kupaona 1	4.55	4.55	1.00	4.55
7	kupaona 2	4.22	4.22	1.00	4.22
posebni dio S-2			88.47		
8	loggia	8.60	8.60	0.75	6.45
9	nat.terasa	8.05	7.30	0.50	3.65
sporedni dio S-2			15.90		
3- sobni		S-2 ukupno		m ²	98.57
vrtna terasa		58.05	58.05	0.10	5.81
spremište SP-2		5.76	5.76	0.75	4.32
pripadak S-2			63.81		
Neto stan S-2 ukupno				m ²	108.70

položaj stana



k.č.br. 2010/1 k.o. Peščenica

mj 1:100

tlocrt prizemlja

issa visual d.o.o.



PROJEKT HEINZELOVA

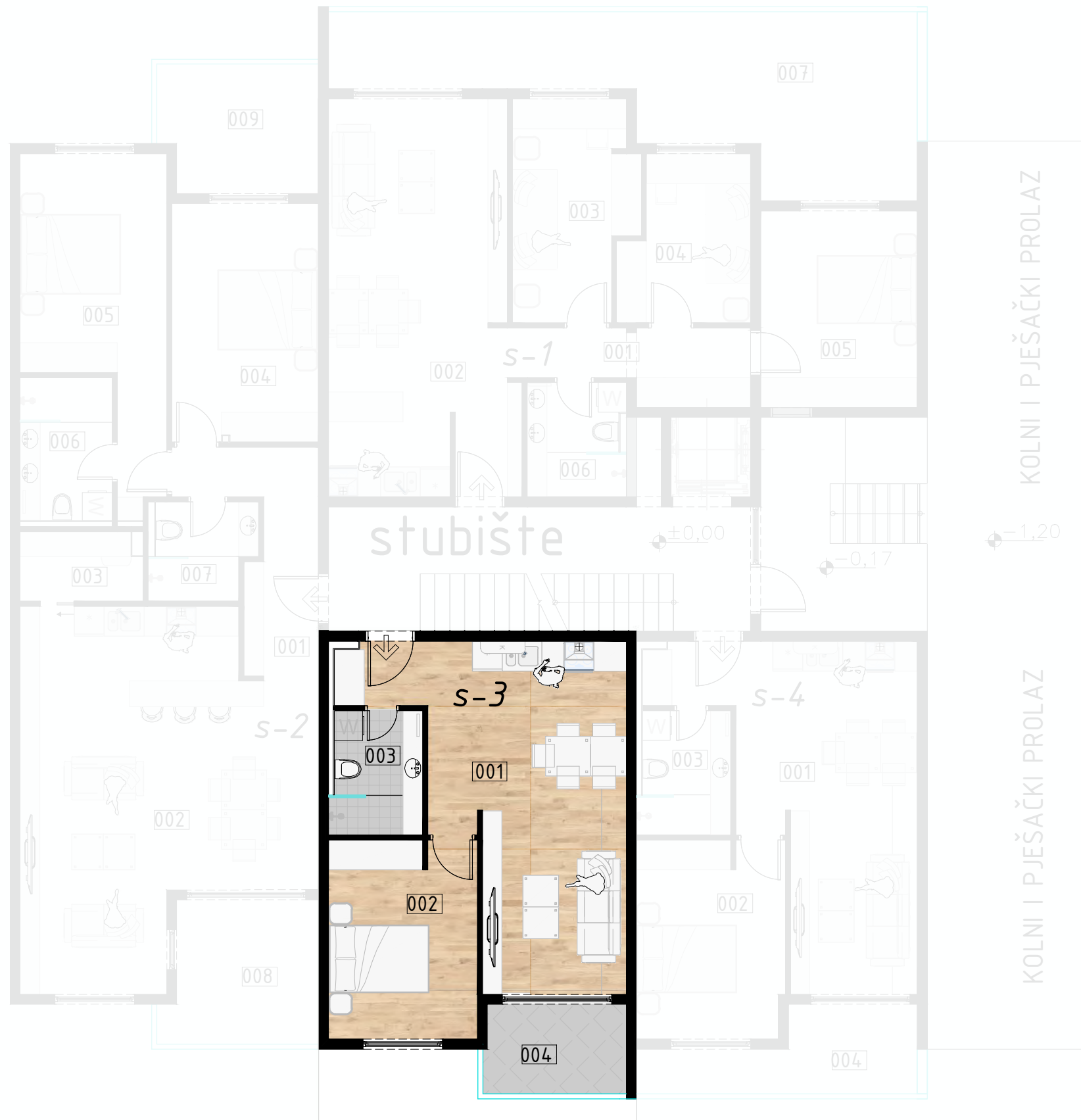


GRAĐEVINA: STAMBENA GRAĐEVINA
Stara Peščenica I br.52

PRIZEMLJE

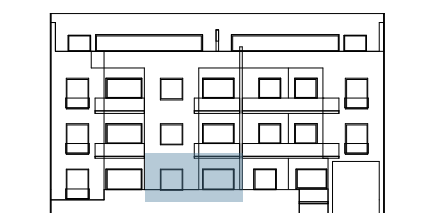
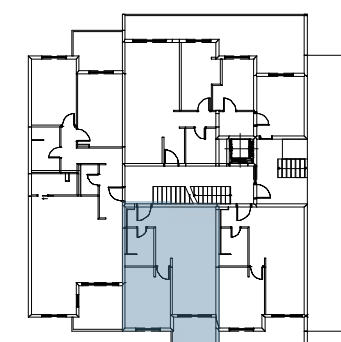
S-3

55,07 m²



STAN S-3 prizemlje					
Br.	Naziv	površina	korisna površina	koef.	korisna vrijednost površina
1	dn.bor/kuh/blag	27.17	27.17	1.00	27.17
2	soba	11.97	11.97	1.00	11.97
3	kupaona	4.57	4.57	1.00	4.57
posebni dio S-3			43.71		
4	nat.terasa	5.15	5.15	0.50	2.58
sporedni dio S-3			5.15		
2- sobni S-3 ukupno				m ²	46.29
vrtna terasa		51.13	51.13	0.10	5.11
spremište SP-3		4.90	4.90	0.75	3.68
pripadak S-3			56.03		
Neto stan S-3 ukupno				m ²	55.07

položaj stana



k.č.br. 2010/1 k.o. Peščenica

mj 1:100

tlocrt prizemlja

issa visual d.o.o.



PROJEKT HEINZELOVA

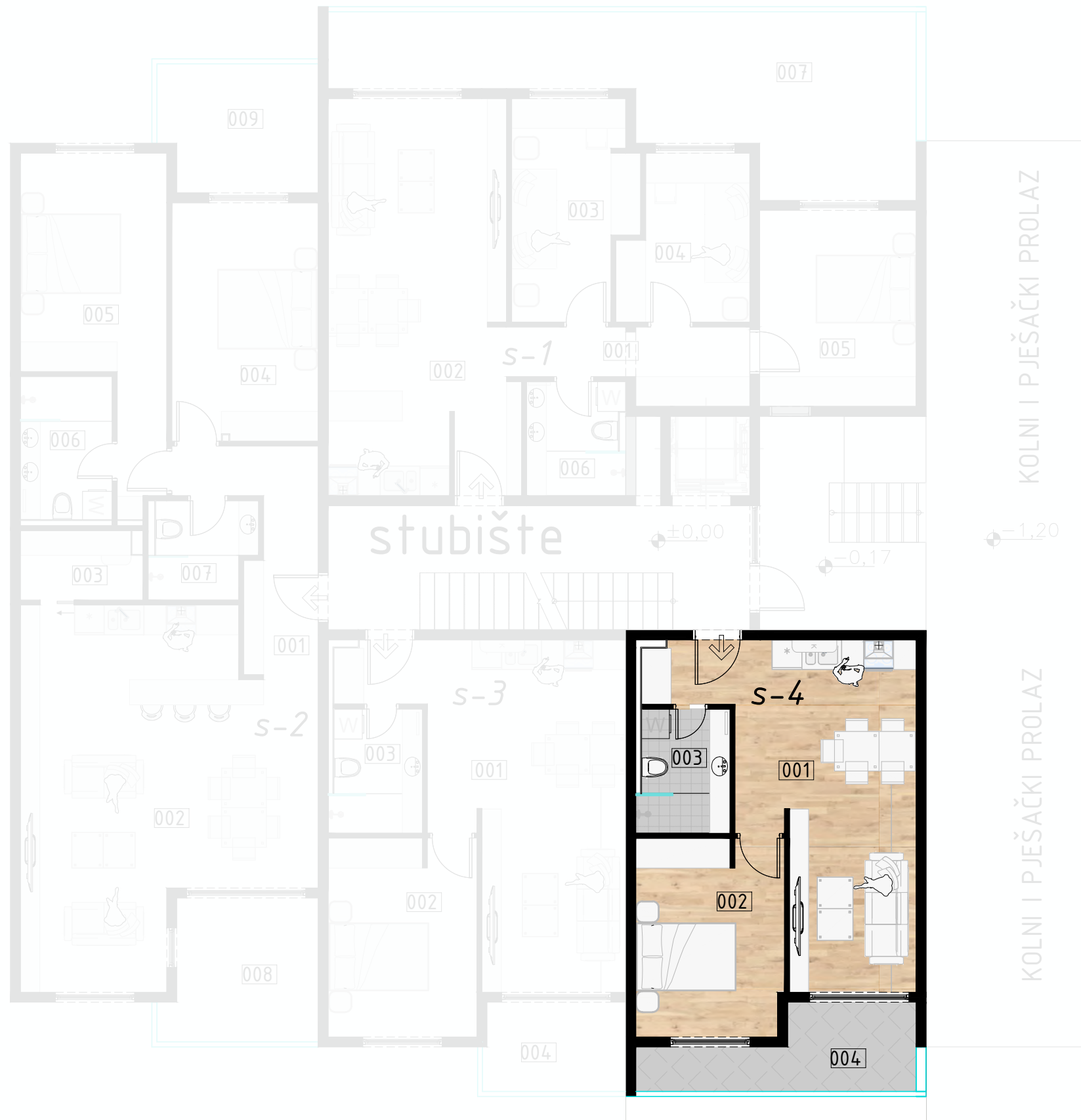


GRADEVINA: STAMBENA GRADEVINA
Stara Peščenica I br.52

PRIZEMLJE

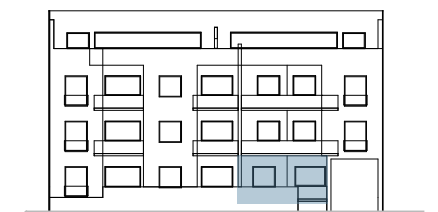
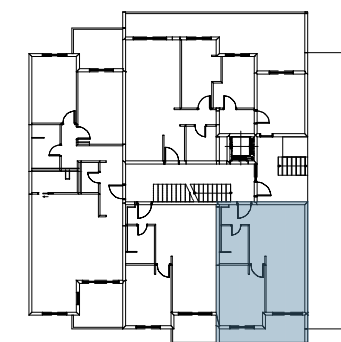
S-4

52,11 m²



STAN S-4		prizemlje			
Br.	Naziv	površina	korisna površina	koef.	korisna vrijednost površina
1	dn.bor/kuh/bla	24.75	24.75	1.00	24.75
2	soba	11.80	11.80	1.00	11.80
3	kupaona	4.55	4.55	1.00	4.55
		posebni dio S-4	41.10		
4	nat.terasa	7.42	7.42	0.50	3.71
		sporedni dio S-4	7.42		
	2- sobni	S-4 ukupno		m ²	44.81
	vrtna terasa	36.22	36.22	0.10	3.62
	spremište SP-4	4.90	4.90	0.75	3.68
		pripadak S-4	41.12		
	Neto stan S-4 ukupno			m ²	52.11

položaj stana



k.č.br. 2010/1 k.o. Peščenica

mj 1:100

tlocrt prizemlja

issa visual d.o.o.



PROJEKT HEINZELOVA

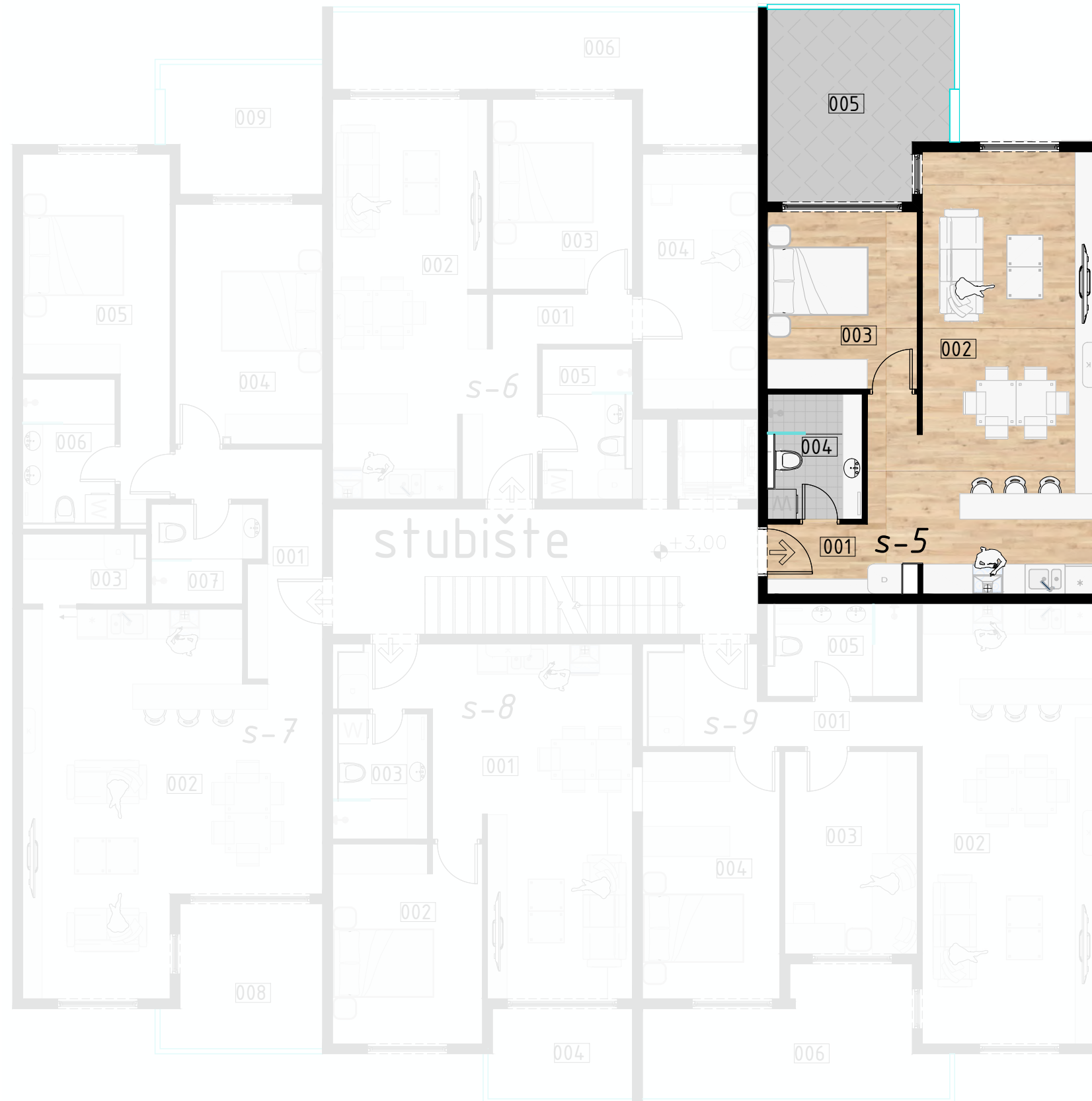


GRADEVINA: STAMBENA GRADEVINA
Stara Peščenica I br.52

1.KAT

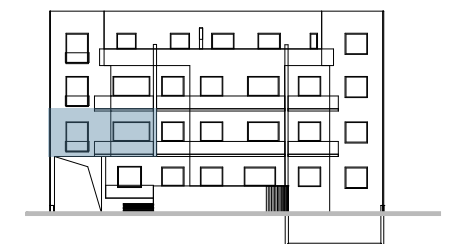
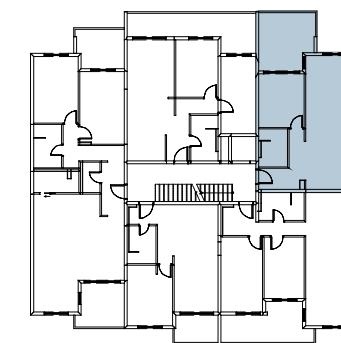
S-5

63,07 m²



STAN S-5		1.kat			
Br.	Naziv	površina	korisna površina	koef.	korisna vrijednost površina
1	ulaz/hodnik	6.64	6.64	1.00	6.64
2	dn.bor/kuh/blag	30.77	30.77	1.00	30.77
3	soba	10.65	10.65	1.00	10.65
4	kupaona	4.60	4.60	1.00	4.60
			posebni dio S-5		52.66
5	nat.terasa	13.31	13.31	0.50	6.66
			sporedni dio S-5		13.31
2- sobni		S-5 ukupno		m ²	59.32
spremište SP-5		5.00	5.00	0.75	3.75
			pripadak S-5		5.00
Neto stan S-5 ukupno				m ²	63.07

položaj stana



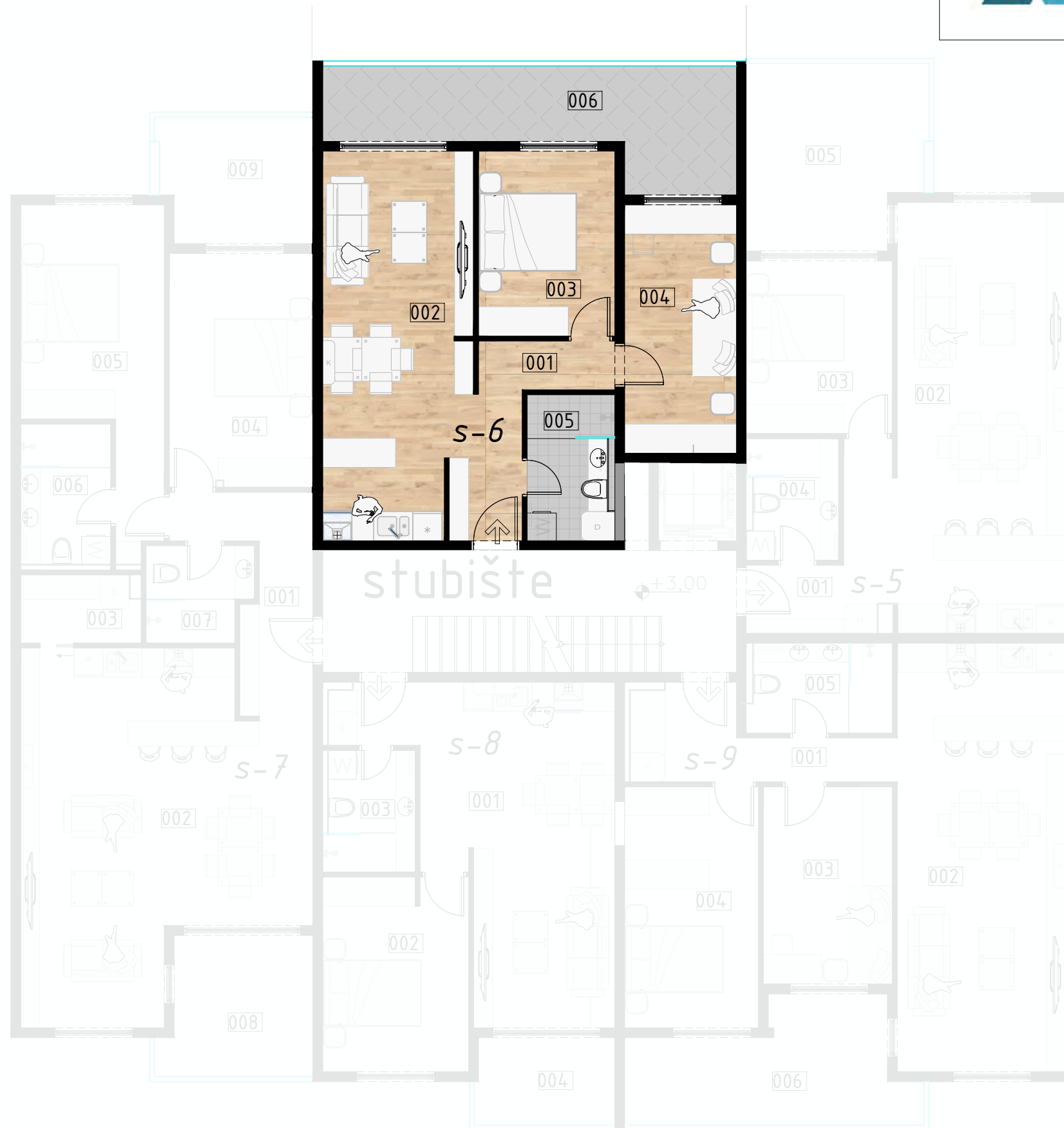
k.č.br. 2010/1 k.o. Peščenica

mj 1:100

tlocrt 1.kata

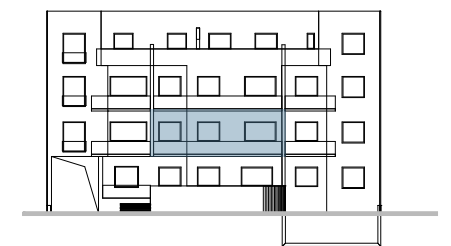
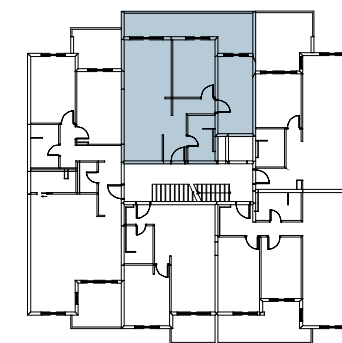
issa visual d.o.o.





STAN S-6		1.kat			
Br.	Naziv	površina	korisna površina	koef.	korisna vrijednost površina
1	ulaz/hodnik	7.41	7.41	1.00	7.41
2	dn.bor/kuh/blag	23.08	23.08	1.00	23.08
3	master soba	10.62	10.62	1.00	10.62
4	soba	11.73	11.73	1.00	11.73
5	kupaona	5.17	5.17	1.00	5.17
posebni dio S-6			58.01		
6	nat.terasa	15.70	15.70	0.50	7.85
sporedni dio S-6			15.70		
3- sobni S-6 ukupno				m ²	65.86
spremište SP-6		6.75	6.75	0.75	5.06
pripadak S-6			6.75		
Neto stan S-6 ukupno				m ²	70.92

položaj stana



PROJEKT HEINZELOVA

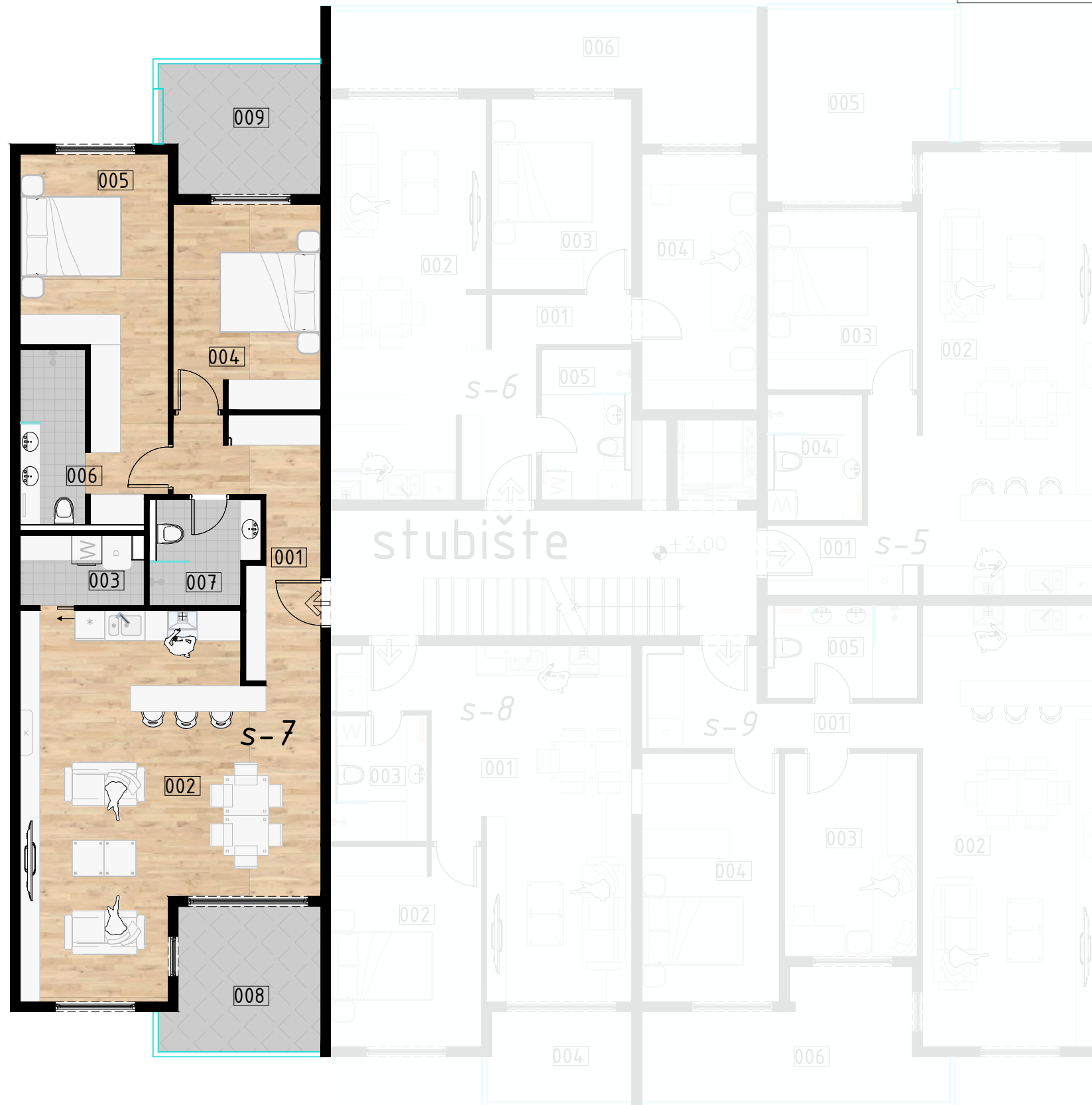


GRADEVINA: STAMBENA GRADEVINA
Stara Peščenica I br.52

1.KAT

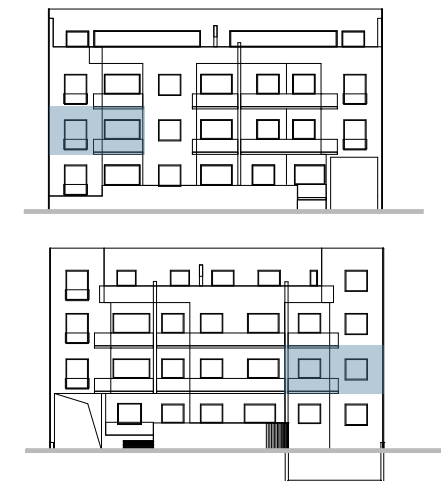
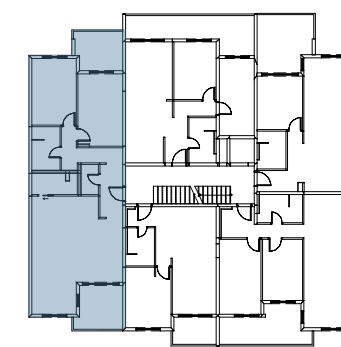
S-7

102,37 m²



STAN S-7		1.kat			
Br.	Naziv	površina	korisna površina	koef.	korisna vrijednost površina
1	ulaz/hodnik	9.62	9.62	1.00	9.62
2	dn.bor/kuh/blag	38.11	38.11	1.00	38.11
3	ostava	3.34	3.34	1.00	3.34
4	soba	12.09	12.09	1.00	12.09
5	master soba	16.54	16.54	1.00	16.54
6	kupaona 1	4.55	4.55	1.00	4.55
7	kupaona 2	4.22	4.22	1.00	4.22
			posebni dio S-7		88.47
8	nat.terasa	8.60	8.60	0.75	6.45
9	nat.terasa	8.05	7.30	0.50	3.65
			sporedni dio S-7		15.90
		3- sobni	S-7 ukupno	m ²	98.57
		spremište SP-7	5.06	0.75	3.80
			pripadak S-7		5.06
Neto stan S-7 ukupno				m ²	102.37

položaj stana



k.č.br. 2010/1 k.o. Peščenica

mj 1:100

tlocrt 1.kata

issa visual d.o.o.



PROJEKT HEINZELOVA

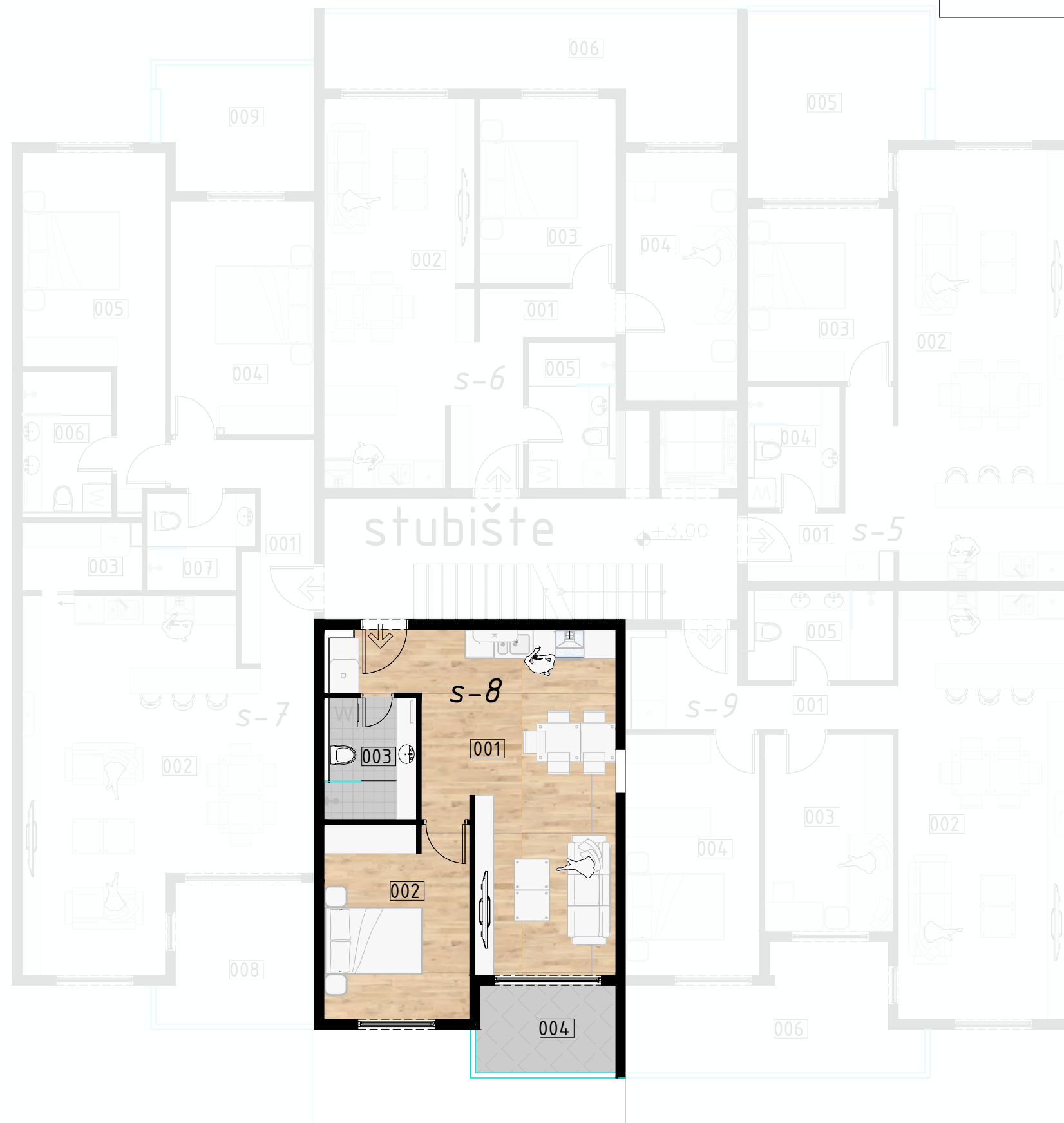


GRAĐEVINA: STAMBENA GRAĐEVINA
Stara Peščenica I br.52

1.KAT

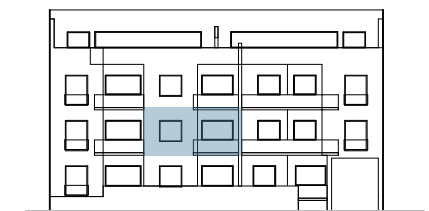
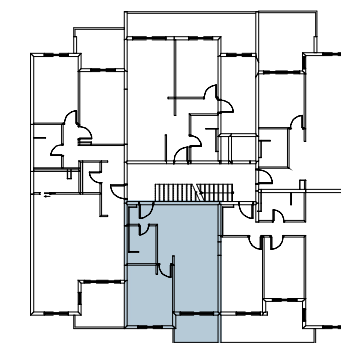
S-8

49,32 m²



STAN S-8		1.kat			
Br.	Naziv	površina	korisna površina	koef.	korisna vrijednost površina
1	dn.bor/kuh/blag	27.17	27.17	1.00	27.17
2	soba	11.97	11.97	1.00	11.97
3	kupaona	4.57	4.57	1.00	4.57
			posebni dio S-8		43.71
4	nat.terasa	5.15	5.15	0.50	2.58
			sporedni dio S-8		5.15
		2- sobni	S-8 ukupno	m ²	46.29
		spremište SP-8	4.05	0.75	3.04
			pripadak S-8		4.05
Neto stan S-8 ukupno				m ²	49.32

položaj stana



k.č.br. 2010/1 k.o. Peščenica

mj 1:100

tlocrt 1.kata

issa visual d.o.o.



PROJEKT HEINZELOVA

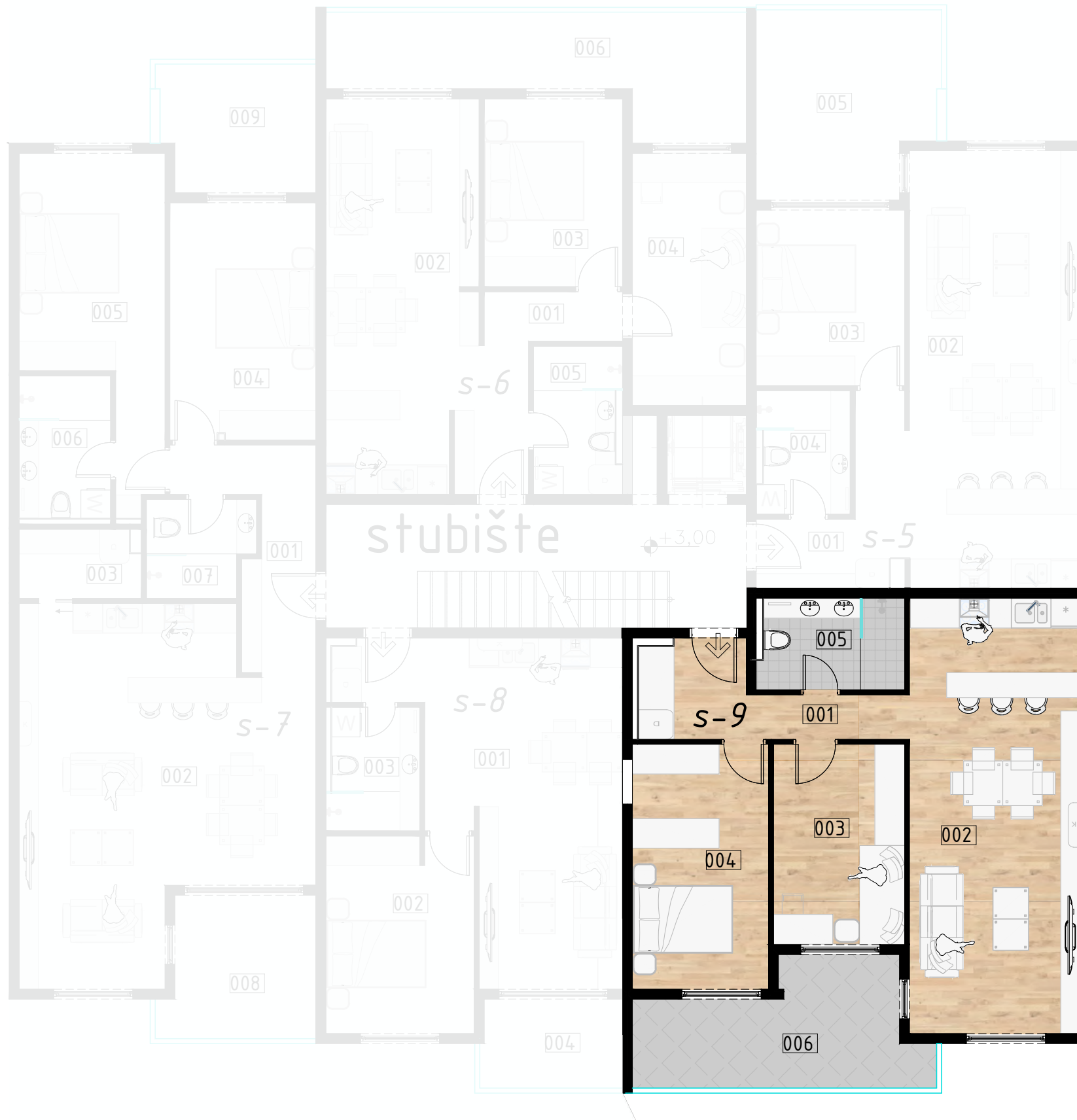


GRADEVINA: STAMBENA GRADEVINA
Stara Peščenica I br.52

1.KAT

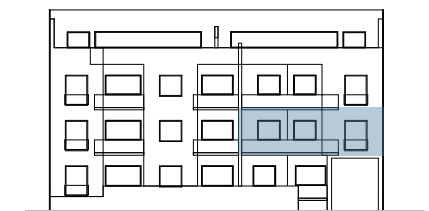
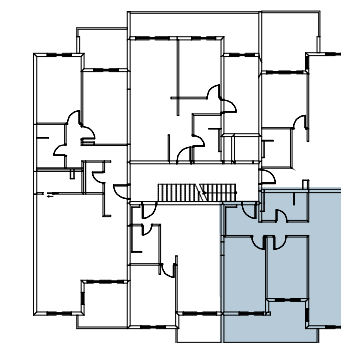
S-9

77,69 m²



STAN S-9		1.kat			
Br.	Naziv	površina	korisna površina	koef.	korisna vrijednost površina
1	ulaz/hodnik	7.32	7.32	1.00	7.32
2	dn.bor/kuh/blag	30.35	30.35	1.00	30.35
3	soba	10.71	10.71	1.00	10.71
4	master soba	13.61	13.61	1.00	13.61
5	kupaona	5.36	5.36	1.00	5.36
			posebni dio S-9		67.35
6	nat.terasa	12.58	12.58	0.50	6.29
			sporedni dio S-9		12.58
		3- sobni	S-9 ukupno	m ²	73.64
		spremište SP-9	5.40	0.75	4.05
			pripadak S-9		5.40
Neto stan S-9 ukupno				m ²	77.69

položaj stana



k.č.br. 2010/1 k.o. Peščenica

mj 1:100

tlocrt 1.kata

issa visual d.o.o.



PROJEKT HEINZELOVA

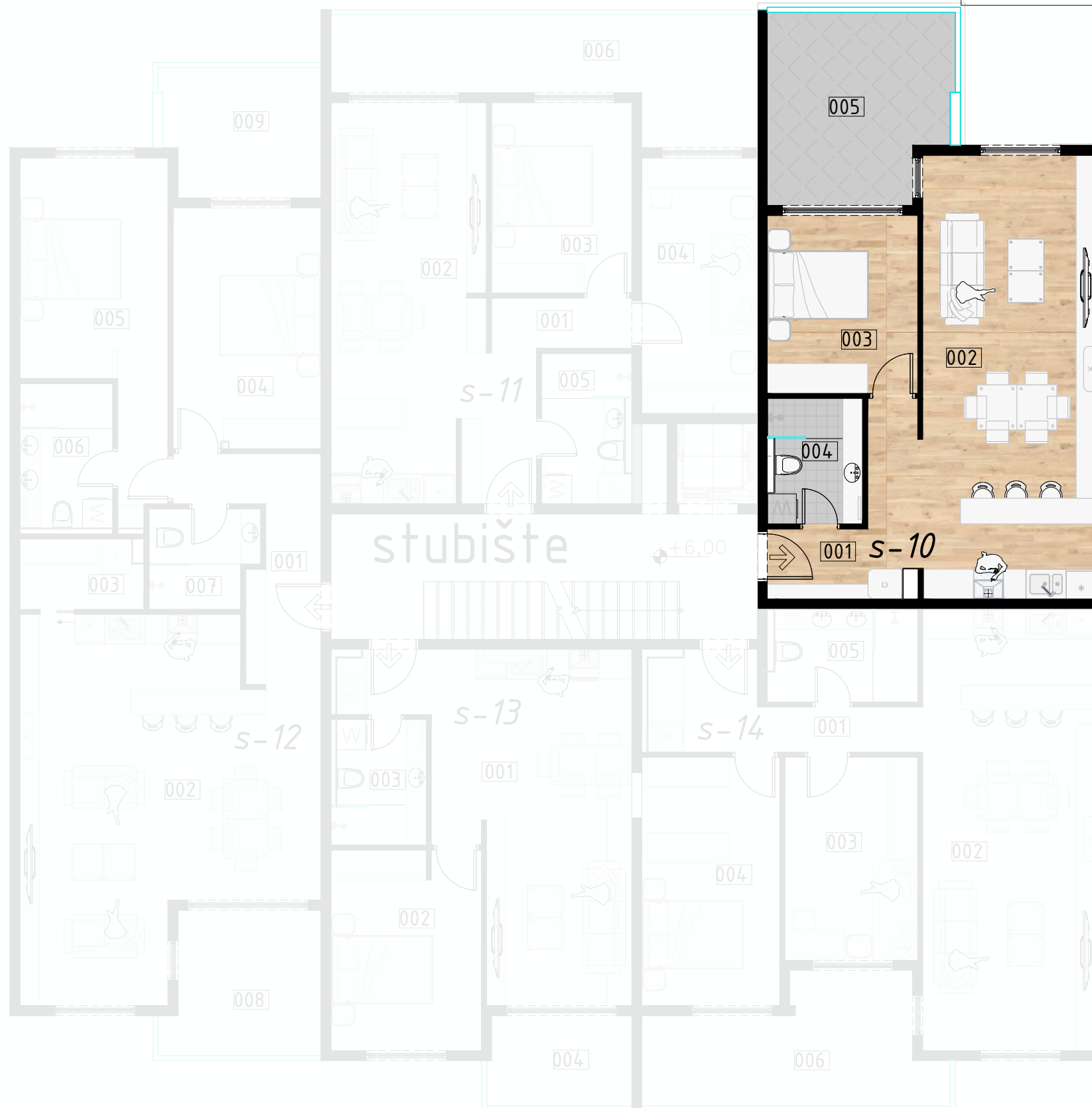


GRADEVINA: STAMBENA GRADEVINA
Stara Peščenica I br.52

2.KAT

S-10

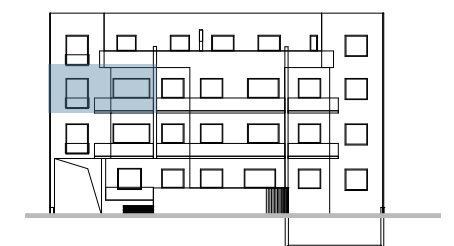
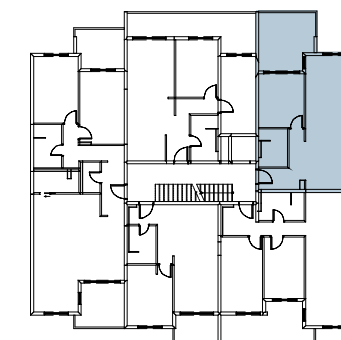
63,34 m²



STAN S-10 2.kat

Br.	Naziv	površina	korisna površina	koef.	korisna vrijednost površina
1	ulaz/hodnik	6.64	6.64	1.00	6.64
2	dn.bor/kuh/blag	30.77	30.77	1.00	30.77
3	soba	10.65	10.65	1.00	10.65
4	kupaona	4.60	4.60	1.00	4.60
posebni dio S-10			52.66		
5	nat.terasa	13.31	13.31	0.50	6.66
sporedni dio S-10			13.31		
2- sobni S-10 ukupno				m ²	59.32
spremište SP-10		5.36	5.36	0.75	4.02
pripadak S-10			5.36		
Neto stan S-10 ukupno				m ²	63.34

položaj stana



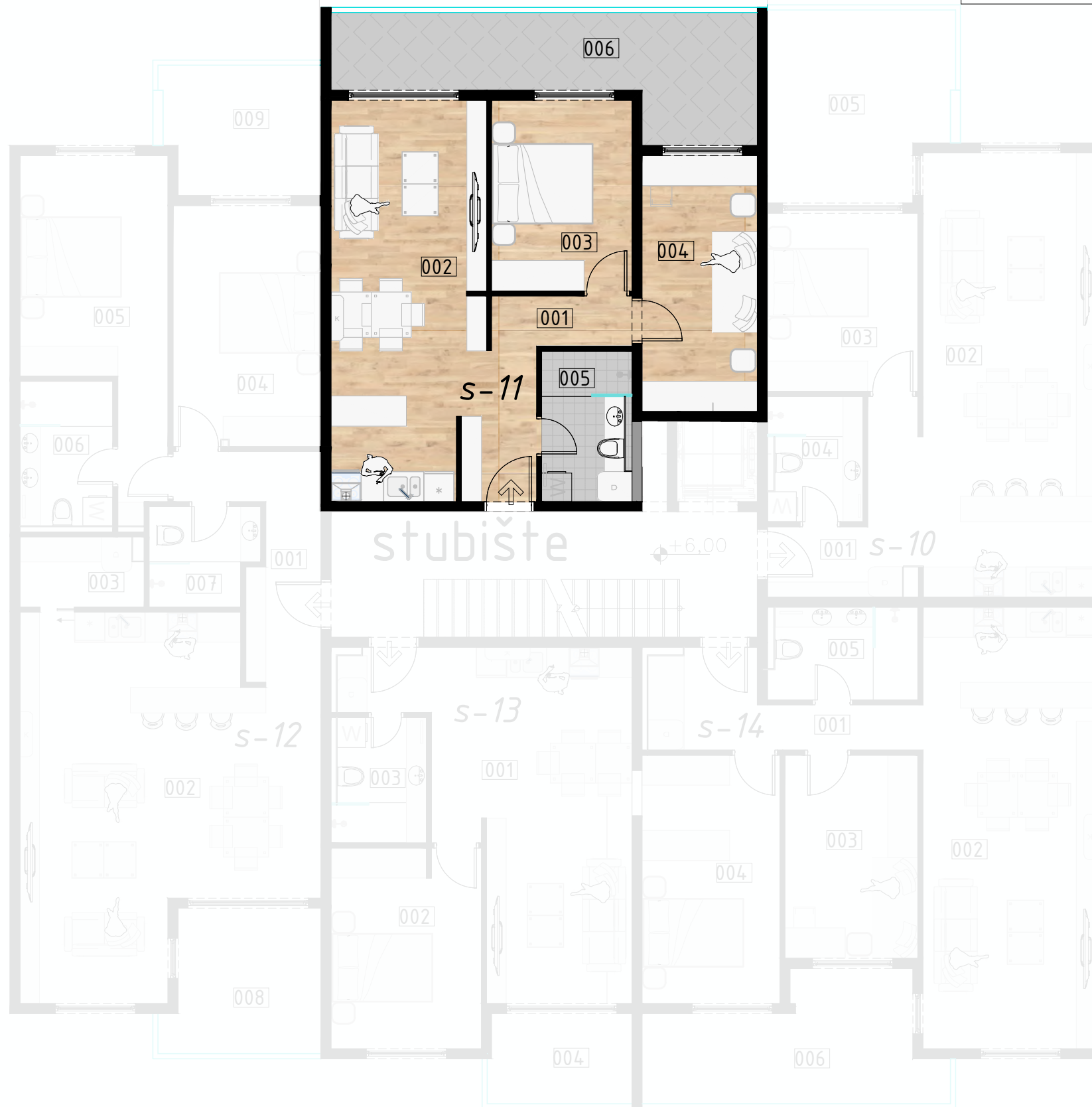
k.č.br. 2010/1 k.o. Peščenica

mj 1:100

tlocrt 2.kata

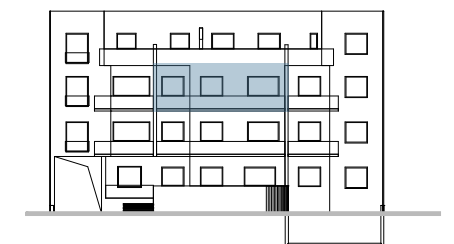
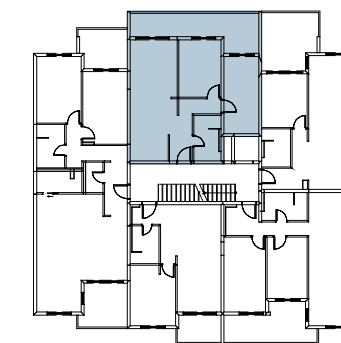
issa visual d.o.o.





STAN S-11		2.kat			
Br.	Naziv	površina	korisna površina	koef.	korisna vrijednost površina
1	ulaz/hodnik	7.41	7.41	1.00	7.41
2	dn.bor/kuh/blag	23.08	23.08	1.00	23.08
3	master soba	10.62	10.62	1.00	10.62
4	soba	11.73	11.73	1.00	11.73
5	kupaona	5.17	5.17	1.00	5.17
posebni dio S-11			58.01		
6	terasa	15.70	15.70	0.50	7.85
sporedni dio S-11			15.70		
3- sobni S-11 ukupno				m ²	65.86
spremište SP-11		6.84	6.84	0.75	5.13
pripadak S-11			6.84		
Neto stan S-11 ukupno				m ²	70.99

položaj stana



PROJEKT HEINZELOVA

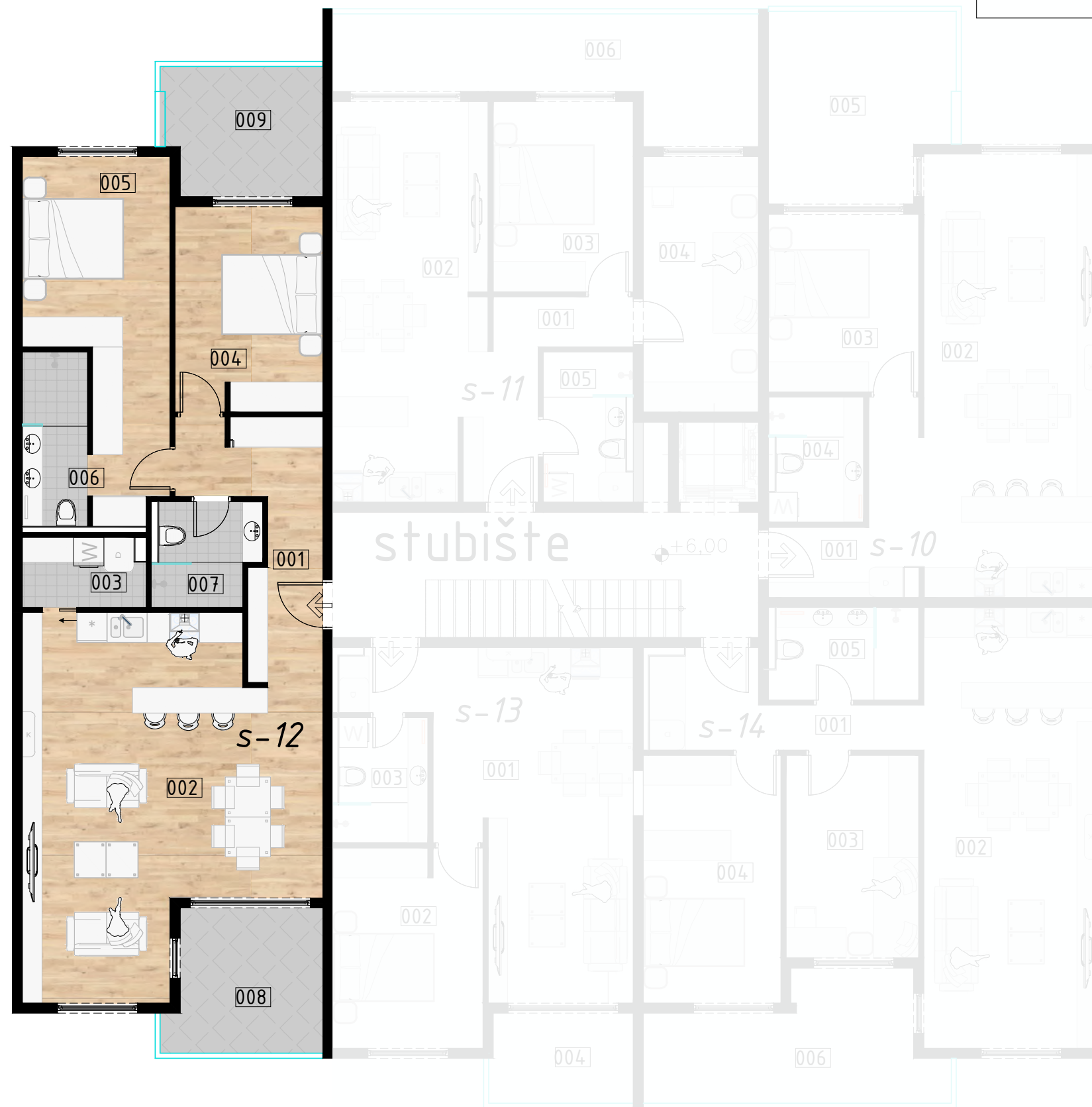


GRADEVINA: STAMBENA GRADEVINA
Stara Peščenica I br.52

2.KAT

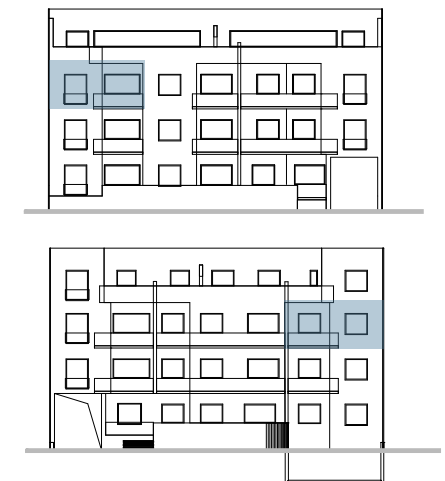
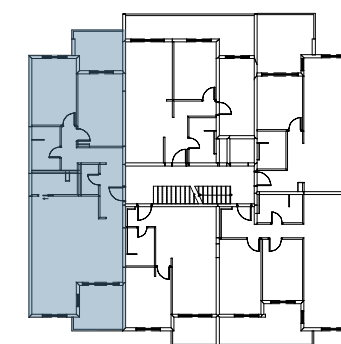
S-12

101,85 m²



STAN S-12		2.kat			
Br.	Naziv	površina	korisna površina	koef.	korisna vrijednost površina
1	ulaz/hodnik	9.62	9.62	1.00	9.62
2	dn.bor/kuh/blag	38.11	38.11	1.00	38.11
3	ostava	3.34	3.34	1.00	3.34
4	soba	12.09	12.09	1.00	12.09
5	master soba	16.54	16.54	1.00	16.54
6	kupaona 1	4.55	4.55	1.00	4.55
7	kupaona 2	4.22	4.22	1.00	4.22
posebni dio S-12			88.47		
8	nat.terasa	8.60	8.60	0.75	6.45
9	nat.terasa	8.05	7.30	0.50	3.65
sporedni dio S-12			15.90		
3- sobni		S-12 ukupno		m ²	98.57
spremište SP-12		4.37	4.37	0.75	3.28
pripadak S-12			4.37		
Neto stan S-12 ukupno				m ²	101.85

položaj stana



k.č.br. 2010/1 k.o. Peščenica

mj 1:100

tlocrt 2.kata

issa visual d.o.o.



PROJEKT HEINZELOVA

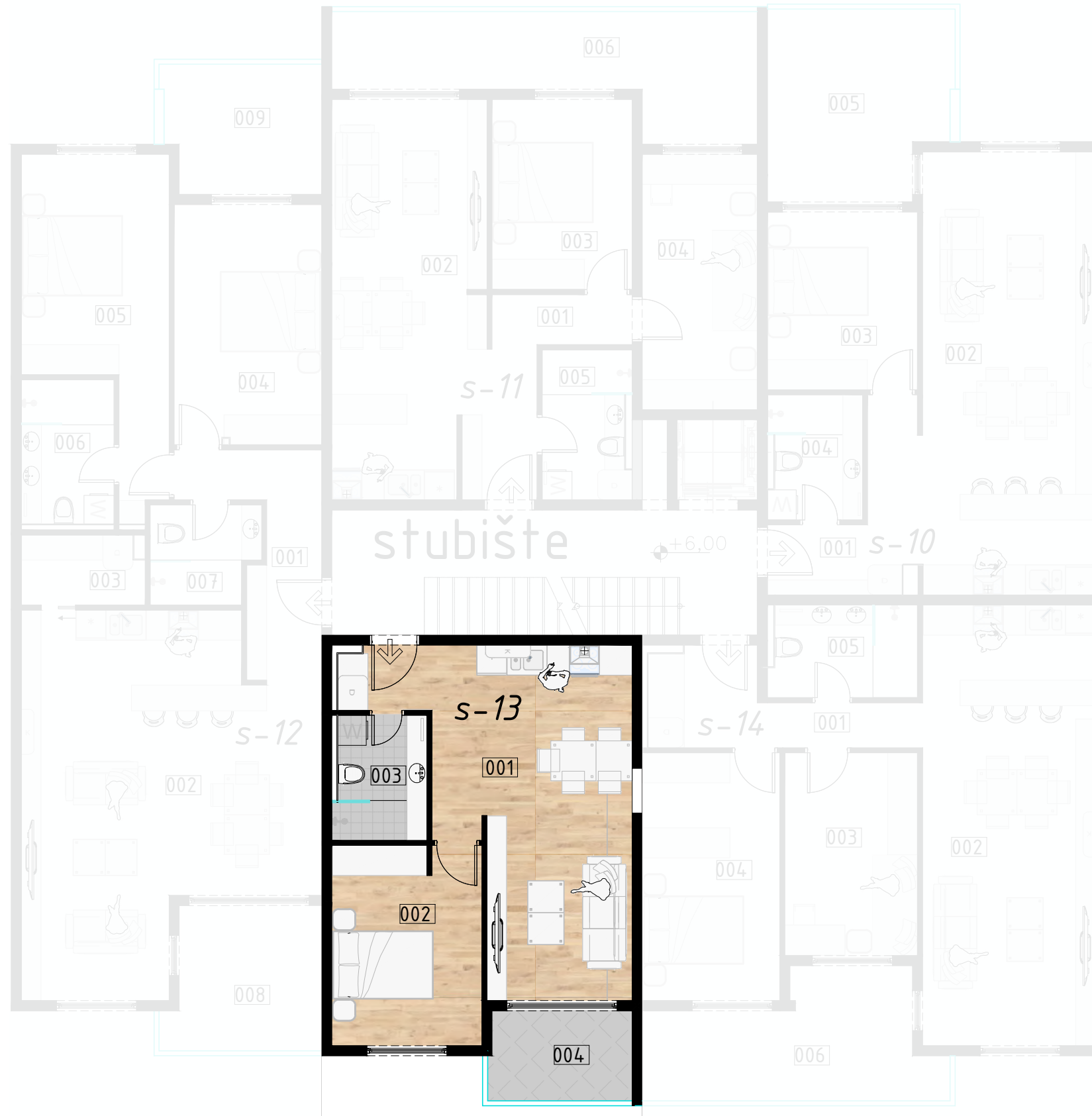


GRAĐEVINA: STAMBENA GRAĐEVINA
Stara Peščenica I br.52

2.KAT

S-13

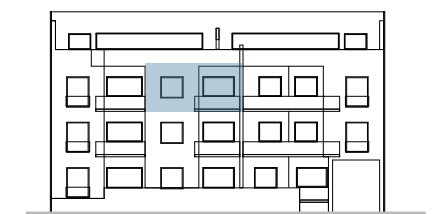
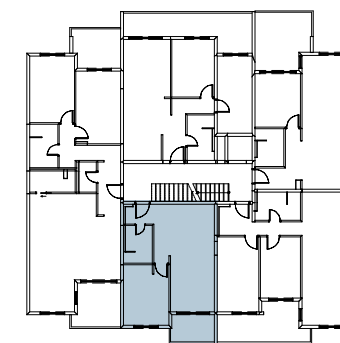
50,34 m²



STAN S-13 2.kat

Br.	Naziv	površina	korisna površina	koef.	korisna vrijednost površina
1	dn.bor/kuh/blag	27.17	27.17	1.00	27.17
2	soba	11.97	11.97	1.00	11.97
3	kupaona	4.57	4.57	1.00	4.57
posebni dio S-13			43.71		
4	nat.terasa	5.15	5.15	0.50	2.58
sporedni dio S-13			5.15		
2- sobni S-13 ukupno				m ²	46.29
spremište SP-13		5.40	5.40	0.75	4.05
pripadak S-13			5.40		
Neto stan S-13 ukupno				m ²	50.34

položaj stana



k.č.br. 2010/1 k.o. Peščenica

mj 1:100

tlocrt 2.kata

issa visual d.o.o.



PROJEKT HEINZELOVA

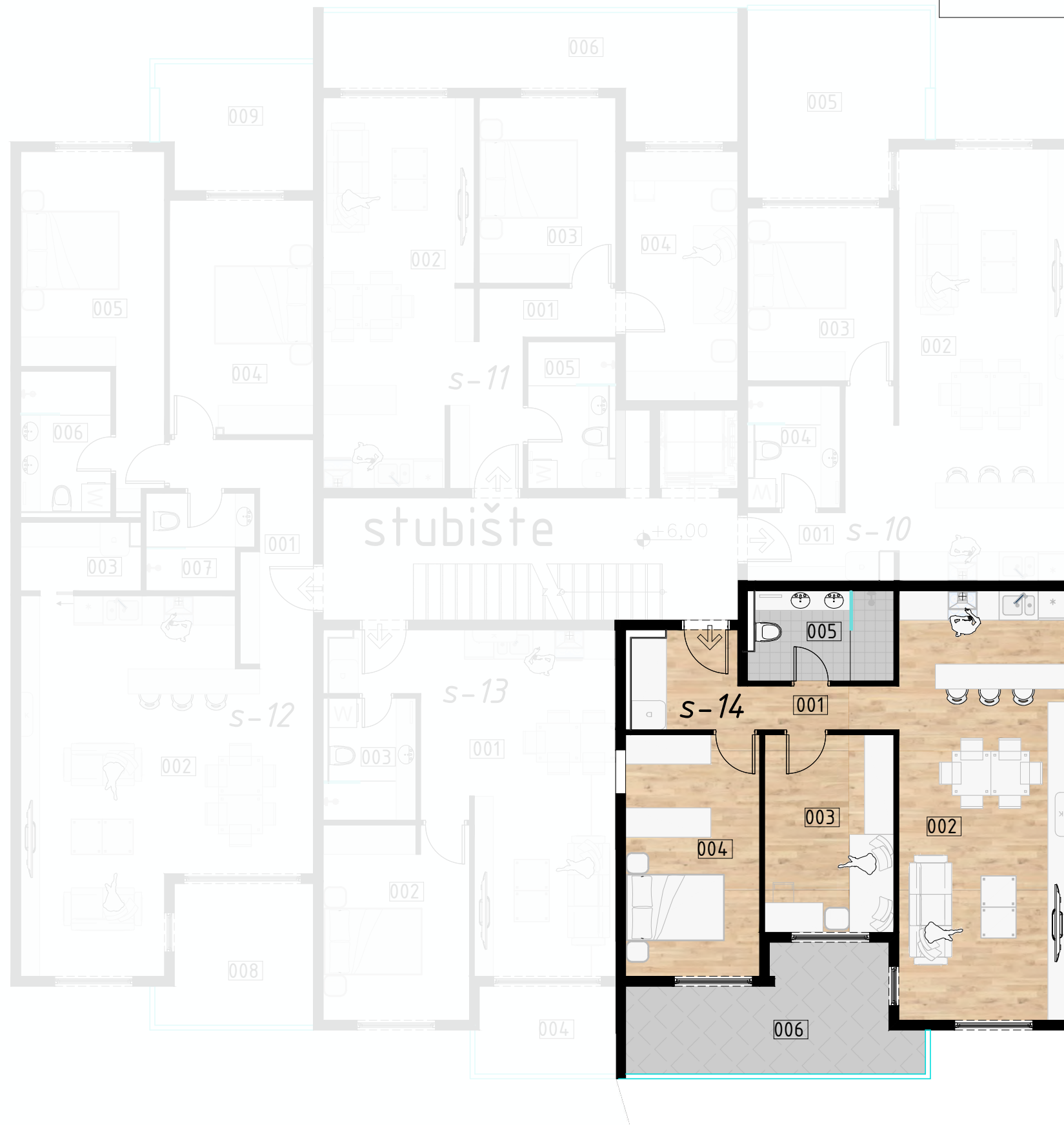


GRADEVINA: STAMBENA GRADEVINA
Stara Peščenica I br.52

2.KAT

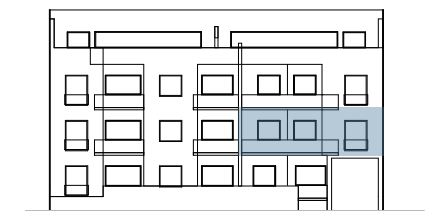
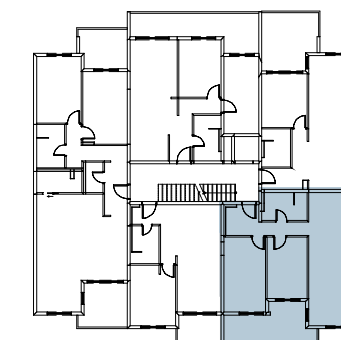
S-14

76,90 m²



STAN S-14		2.kat			
Br.	Naziv	površina	korisna površina	koef.	korisna vrijednost površina
1	ulaz/hodnik	7.32	7.32	1.00	7.32
2	dn.bor/kuh/blag	30.35	30.35	1.00	30.35
3	soba	10.71	10.71	1.00	10.71
4	master soba	13.61	13.61	1.00	13.61
5	kupaona	5.36	5.36	1.00	5.36
posebni dio S-14			67.35		
6	nat.terasa	12.58	12.58	0.50	6.29
sporedni dio S-14			12.58		
3- sobni S-14 ukupno				m ²	73.64
spremište SP-14		4.34	4.34	0.75	3.26
pripadak S-14			4.34		
Neto stan S-14 ukupno				m ²	76.90

položaj stana



k.č.br. 2010/1 k.o. Peščenica

mj 1:100

tlocrt 2.kata

issa visual d.o.o.



PROJEKT HEINZELOVA

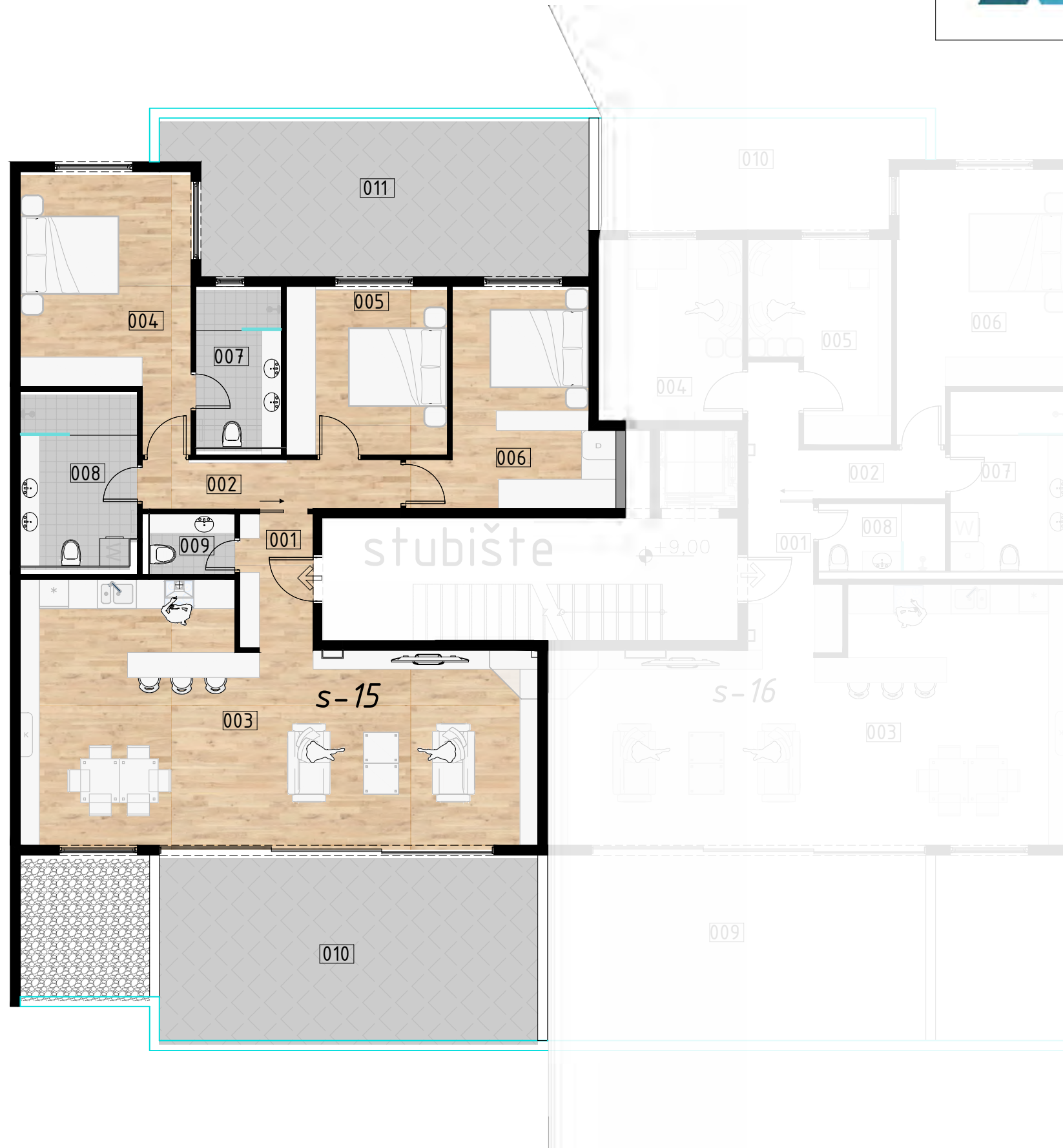


GRADEVINA: STAMBENA GRADEVINA
Stara Peščenica I br.52

uvučeni kat

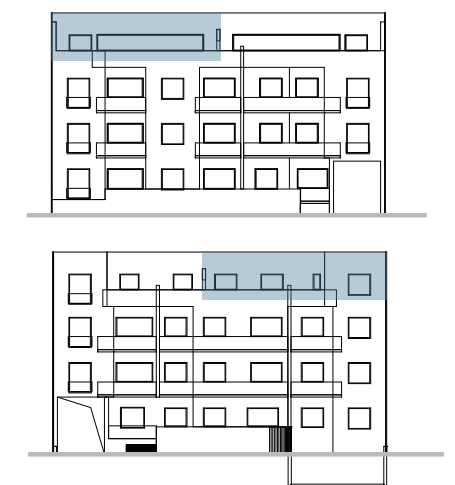
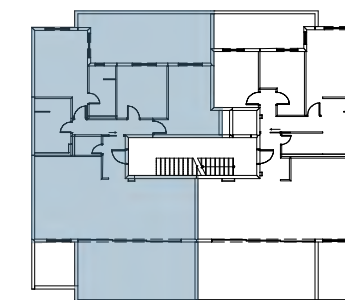
S-15

139,62 m²



STAN S-15		uv.kat			
Br.	Naziv	površina	korisna površina	koef.	korisna vrijednost površina
1	ulaz	4.17	4.17	1.00	4.17
2	hodnik	5.34	5.34	1.00	5.34
3	dn.bor/kuh/blag	48.82	48.82	1.00	48.82
4	master soba	16.80	16.80	1.00	16.80
5	soba 1	11.38	11.38	1.00	11.38
6	soba2	14.56	14.56	1.00	14.56
7	kupaona 1	5.75	5.75	1.00	5.75
8	kupaona 2	8.46	8.46	1.00	8.46
9	wc	2.35	2.35	1.00	2.35
posebni dio S-15			117.63		
10	terasa	29.45	29.45	0.25	7.36
11	terasa	26.60	26.60	0.25	6.65
sporedni dio S-15			56.05		
4- sobni S-15 ukupno				m ²	131.64
spremište SP-15		10.63	10.63	0.75	7.97
pripadak S-15			10.63		
Neto stan S-15 ukupno				m ²	139.62

položaj stana



k.č.br. 2010/1 k.o. Peščenica

mj 1:100

tlocrt uvučenoga kata

issa visual d.o.o.



PROJEKT HEINZELOVA

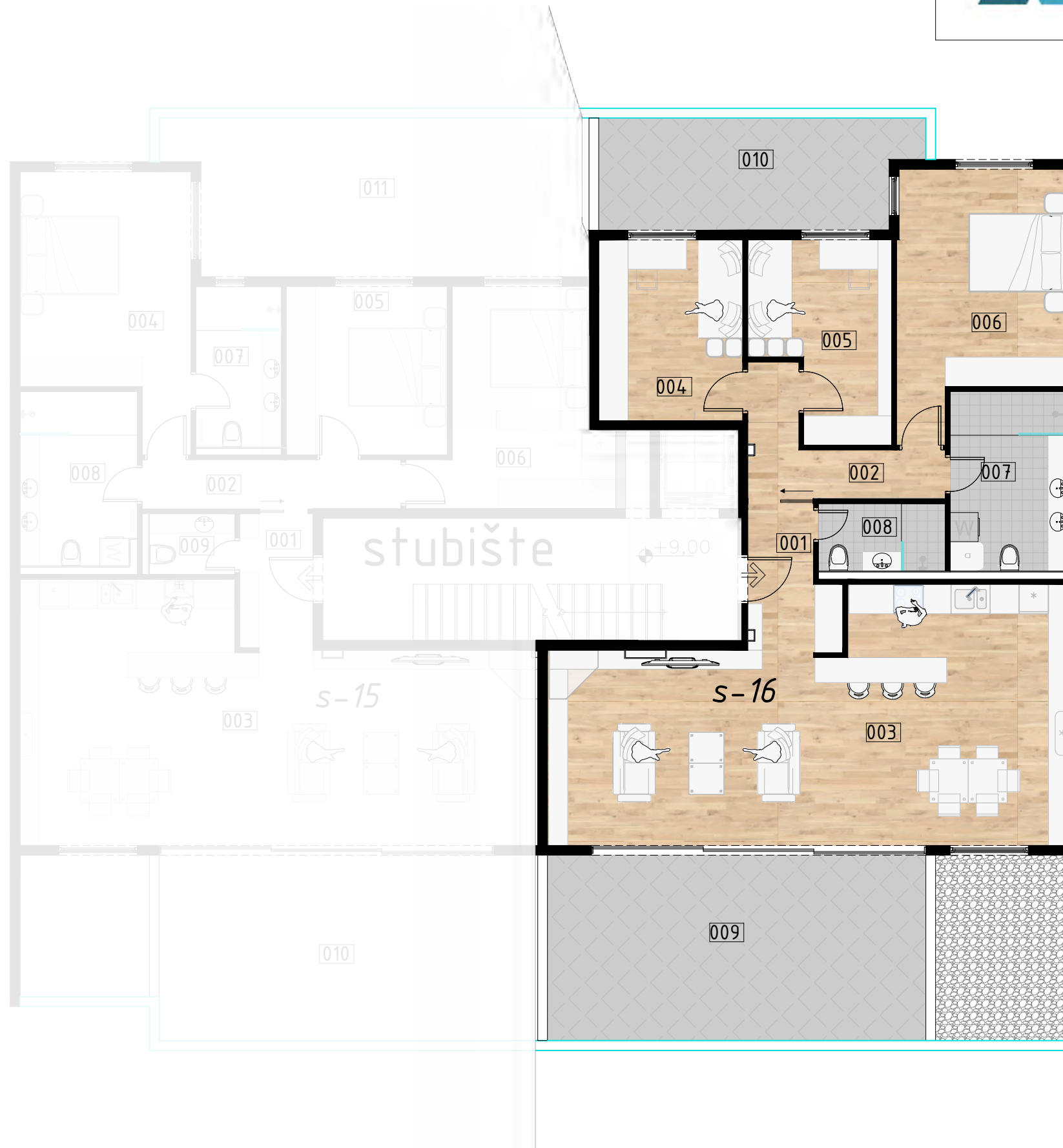


GRADEVINA: STAMBENA GRADEVINA
Stara Peščenica I br.52

uvučeni kat

S-16

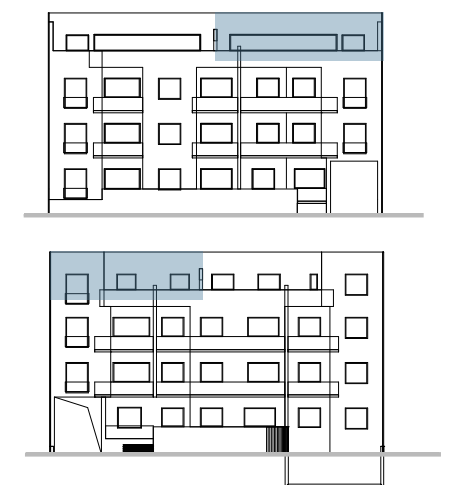
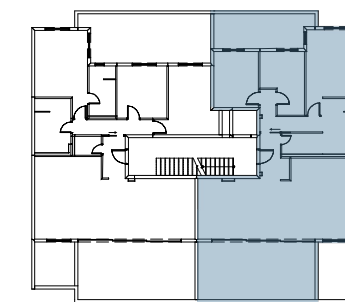
133,74 m²



STAN S-16 uv.kat

Br.	Naziv	površina	korisna površina	koef.	korisna vrijednost površina
1	ulaz	5.76	5.76	1.00	5.76
2	hodnik	5.97	5.97	1.00	5.97
3	dn.bor/kuh/blag	47.52	47.52	1.00	47.52
4	soba 1	10.95	10.95	1.00	10.95
5	soba 2	10.35	10.35	1.00	10.35
6	master soba	16.70	16.70	1.00	16.70
7	kupaona	8.83	8.83	1.00	8.83
8	wc	3.60	3.60	1.00	3.60
posebni dio S-16			109.68		
9	terasa	29.45	29.45	0.25	7.36
10	terasa	9.30	9.30	0.25	2.33
sporedni dio S-16			38.75		
4- sobni S-16 ukupno				m ²	119.37
spremište SP-16		8.23	8.23	0.75	6.17
GPM 8		16.40	16.40	0.50	8.20
pripadak S-16			24.63		
Neto stan S-16 ukupno				m ²	133.74

položaj stana



k.č.br. 2010/1 k.o. Peščenica

mj 1:100

tlocrt uvučenoga kata

issa visual d.o.o.



Stambena zgrada



Projekt Heinzlova, Zagreb

Stambena zgrada



Projekt Heinzlova, Zagreb



3F

PROJEKT1
ZAGREB

3F Projekt1 d.o.o.

GSM: +385 98 355 365

email: info@3-f.hr

web: www.3-f.hr

